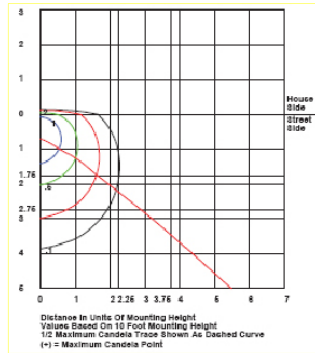


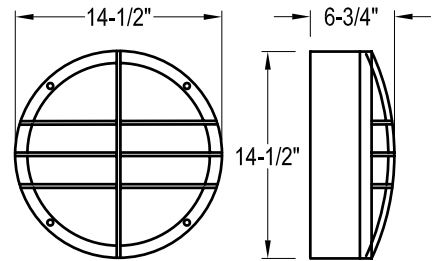


# Fixture Specification

MODEL NUMBER: CGT JOB: \_\_\_\_\_ TYPE: \_\_\_\_\_



CGT/TC42



## Light Source

Type	Quad, Spiral or Triple	Triple
Wattage	26	32 42
Quantity	1/2	1/2 1/2

## Standard Features

<b>HOUSING</b>	Die Cast Aluminum 1/2" Threaded Apertures for Conduit and Photocell Mounts over Electrical Box or to Structure for Surface Conduit Gasketed	<b>FINISH</b>	White	<b>LENS</b>	Opalescent Polycarbonate Mounted in Die Cast Grid Front Frame
<b>LAMP</b>	Twin, Quad, and Triple - 2700K	<b>ELECTRICAL</b>	Electronic Ballast Normal Power Factor 120V-60Hz AC UL Listed Wet Location	<b>REFLECTOR</b>	White Powdercoated Steel

## Special options

Please Note: Standard Features May Change if Fixtures are Ordered with Special Option(s).

<b>BALLAST</b>	<input type="checkbox"/> DV 120/277 Volt <input type="checkbox"/> EMG Emergency <input type="checkbox"/> HPF High Power Factor <input type="checkbox"/> V 277 Volt	<b>FINISH</b>	<input type="checkbox"/> FB Bronzestone <input type="checkbox"/> FCU Custom	<b>ACCESSORIES</b>	<input type="checkbox"/> EPC External Photocell <input type="checkbox"/> IPC Internal Photocell
<b>KELVIN</b>	<input type="checkbox"/> 3500K <input type="checkbox"/> 4100K				

ASL  
25 Twelfth Street  
Brooklyn, NY 11215-3820

Toll Free  
Phone: 800-369-1101  
Fax: 800-552-3465

Local  
Phone: 718-369-1100  
Fax: 718-369-1105

Online  
email: info@aslighting.com  
visit: www.aslighting.com



© copyright 2008 by American Scientific Lighting Corp. All rights reserved.

**CGT**